

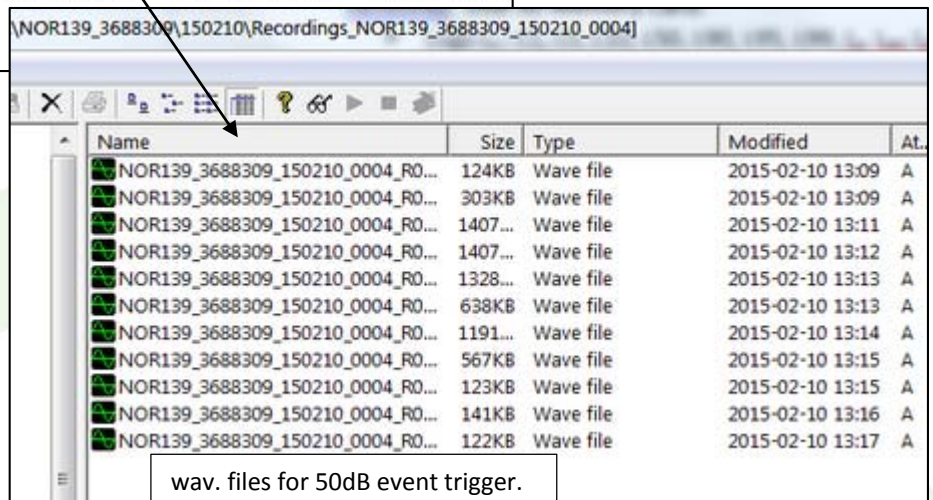
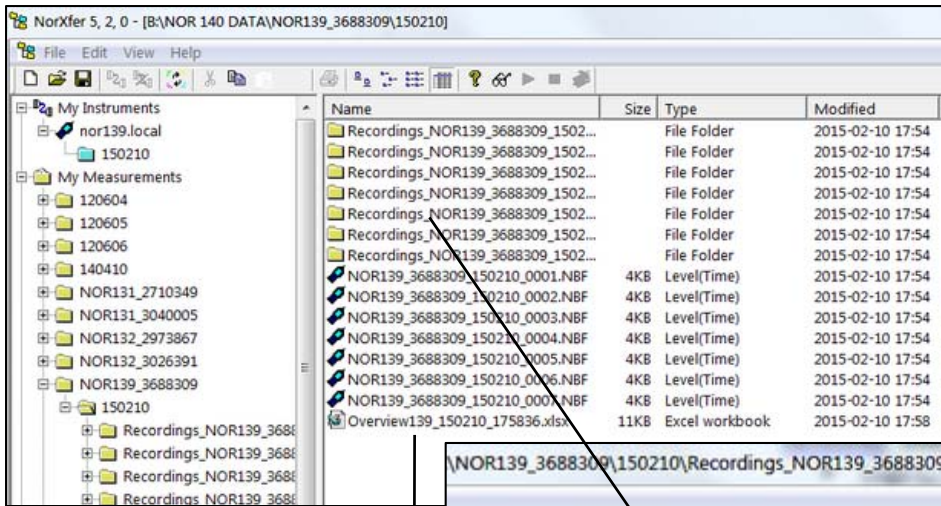
Norsonic 139 Type1 Noise Loggers



1. [Nor139-SR Precision Type 1 with Sound Recording \(SR\)](#)
2. [Nor139-SRT Precision Type1 with SR + RT 1/1 & 1/3](#)

Integrating Impulse Type1 SLM with Parallel A, C or Z networks, 2Gb SD Memory Card.

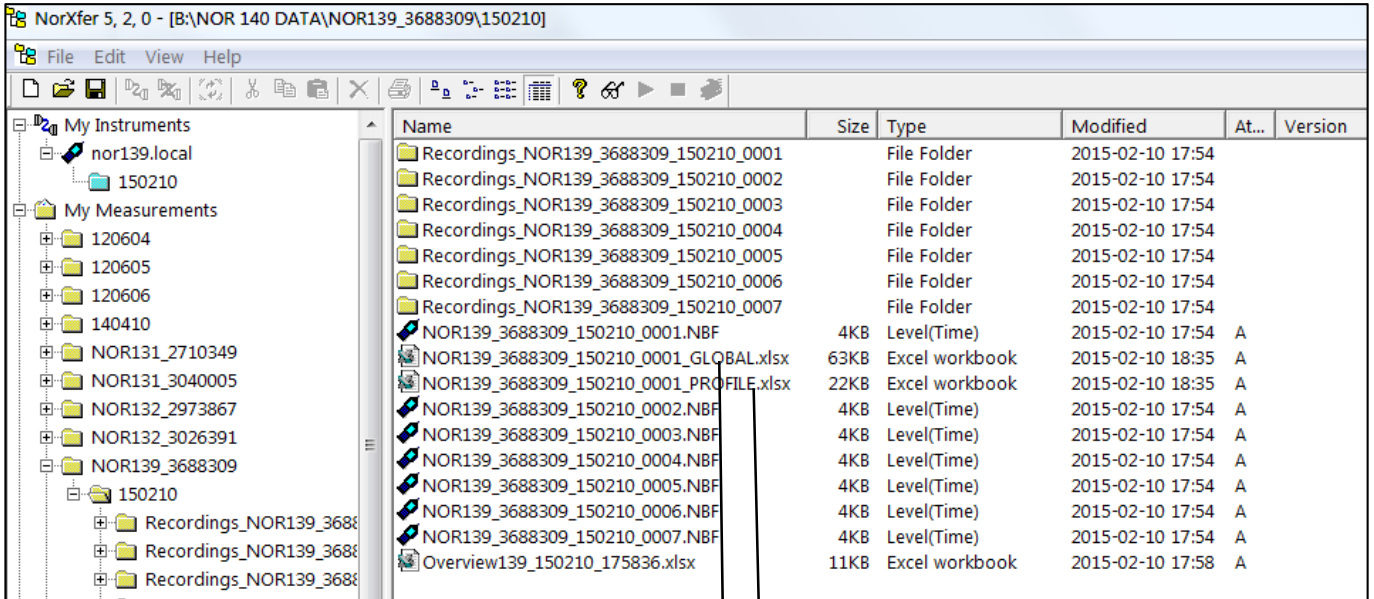
- Logs L_n : L1, L5, L10, L50, L90, L95, L99, L_p , L_{eq} , L_{max} ,
- Sound Recording wav. User programmable
- Simultaneously logs primary interval plus profile interval
- Pelican 1450 Weatherproof case, Wind shield
- 4 piece microphone mast, 2m mic. ext. cable
- Accredited Calibration Certificate valid 24 Months
- Nor1020 Data Transfer Software.



1	Directory:	B:\NOR139_3688309\150210										
2												
3	File	Date	Duration	LAeq	LAFmax	LASmax	LCpeak	LAF,L1	LAF,L5	LAF,L10	LAF,L90	LAF,L99
4												
5	NOR139_3688309_150210	(2015/02/10 12:38:02.00)	(0:10:0.0)	52	78.1	69.9	94.9	60.6	57.4	54.2	47.8	47.6
6	NOR139_3688309_150210	(2015/02/10 12:48:05.00)	(0:10:0.0)	56	87	81	101.2	61.1	52.4	51	48.1	47.9
7	NOR139_3688309_150210	(2015/02/10 12:58:07.00)	(0:10:0.0)	51.4	82.8	74.9	107.7	52.8	49.8	49.3	48	47.9
8	NOR139_3688309_150210	(2015/02/10 13:08:09.00)	(0:10:0.0)	64.9	80.2	75.2	97.3	75.6	72	69.6	47.7	47.3
9	NOR139_3688309_150210	(2015/02/10 13:18:12.00)	(0:10:0.0)	50	74.5	69.3	93.2	58.3	49.8	48.8	47.2	47.1
10	NOR139_3688309_150210	(2015/02/10 13:28:14.00)	(0:10:0.0)	48.2	62.7	59.8	84	54.9	49.6	48.6	47	46.9
11	NOR139_3688309_150210	(2015/02/10 13:38:16.00)	(0:4:2.0)	50.3	72.9	66.1	94	57.7	50.7	49.2	46.9	46.8

Selecting Profile Interval Data from primary interval.

In this case 1min profiles were programmed from each 10 min interval (Note with 1/3 option)



Period: Time:	LAFspl	LAeq	LAFmax	LCpeak	LFfsl	Lfreq																LFFmax															
						8.0 Hz	16 Hz	31.5 Hz	63 Hz	125 Hz	250 Hz	500 Hz	1.0 kHz	2.0 kHz	4.0 kHz	8.0 kHz	16.0 kHz	8.0 Hz	16.0 kHz	8.0 Hz	16.0 kHz	8.0 Hz	16.0 kHz	8.0 Hz	16.0 kHz	8.0 Hz	16.0 kHz	8.0 Hz	16.0 kHz	8.0 Hz	16.0 kHz						
0 (2015-02-10 12:38:02.000)	47.8	54.2	78.1	94.9	60.6	50.8	42	36.1	44.4	45.9	45.4	42.1	41.1	33.8	23.3	21.3	63.8	63.6	52.7	47.4	47.9	49.2	49	45.7	50.7	41.5	31.8	26.1	76.3	78	71.7	68.8					
1 (2015-02-10 12:39:02.000)	47.7	48.2	55.4	77.2	54.7	56.6	42.4	41.3	46.8	45.2	44.3	42.5	41.2	33.3	25.3	24.2	61.8	61.9	50.1	44.9	46.5	46.8	45.3	42.7	41.1	34.4	27.2	23.9	75.5	73.1	62.5	59.6					
2 (2015-02-10 12:40:02.000)	48.8	51.9	63.8	89.9	59	58.8	48.2	44.6	43.3	46.5	48.7	42.1	40.9	33	22.6	21	66.1	68.2	57.4	52.6	54.6	54.2	51.1	45.1	42	35	28.3	24.2	78.8	83.7	71.2	65.3					
3 (2015-02-10 12:41:02.000)	52.5	51.2	64.8	84.6	61.6	66.7	58	54.9	54.6	56	49.8	45.6	42.2	34.6	24	21.9	62.5	62.5	52	48.7	51.6	52	49.9	44.6	43.2	35.1	27.1	23.3	78.4	74.4	66.1	62.5					
4 (2015-02-10 12:42:02.000)	48.4	52.8	61.5	82.5	58.6	57.4	41.7	37.9	42.4	46.2	46.4	43	41	34	23.2	21.1	63.3	61.7	46.6	44.4	57.3	53.6	51.7	46.8	41.8	34.9	28.6	24.3	78.2	74.1	60.2	57.4					
5 (2015-02-10 12:43:02.000)	48	48.7	57.2	83.1	57.9	52.9	39.5	38.2	44.2	46	44.2	43.3	41.2	33.8	24.2	26.8	70	67.8	50.1	41	44.9	46.6	45.7	43.4	41.7	36	29.6	24.9	85.7	84	64.4	50.6					
6 (2015-02-10 12:44:02.000)	48.6	48.4	51.8	79.4	78	80.2	56.5	42.6	44.9	47.8	47.4	42.4	40.8	33.9	24.4	21.9	64.6	63.1	47.4	41	43.5	46.5	45.7	43.3	41.1	34.5	26.1	22.9	78	81.6	64.1	55.7					
7 (2015-02-10 12:45:02.000)	62.2	56.6	64.9	85.8	84	78.8	57.7	48.2	56.7	57.7	62.2	57.3	50	43	37.6	28.7	75	71.6	53.9	47.8	52.6	53.5	56.6	50.8	45.9	39.4	33.6	26	87.2	86.1	67	55.9					
8 (2015-02-10 12:46:02.000)	48.8	50.2	63.3	86.5	59.4	57.7	37.4	35.9	41.7	45.9	45.2	45	40.8	33.7	24.3	22.8	71.2	69.3	57.5	49.3	45.8	47.3	47.9	45.7	41.9	36	29	24.6	83.8	87	76	68					
9 (2015-02-10 12:47:02.000)	49	49.1	54.2	72.1	55.5	54.3	36.2	35.7	42.5	47	45.3	44.7	41.7	34.5	25.8	21	61	59.4	40.7	37.2	42.8	46.3	46.1	44.7	41.6	35.1	27.7	23.2	74.6	72.3	55.7	49.4					

The sheet above represents the 1min Data Values for each minute, of this 10 min primary interval.

These are the GLOBAL Values.....every single noise parameter value of the primary 10min interval

Period: Time:	LAFmax	LASmax	LAlmax	LAFmin	LASmin	LAlmin	LAeq	LAeq	LAE	LAIE	LApeak	LCFmax	LCmax	LCmin	LCFmin	LC5min	LC1min	LCeq	LCeq	LCE	LCIE	LCpeak	LAF,0.1%	LAF,1.0%	LAF,5.0%	LAF,10.0%	LAF,50.0%	LAF,90.0%
0 (2015-02-10 12:38:02.000)	78.1	69.9	82.2	46.8	47.5	47.2	52	58.3	79.8	86.1	96.3	79	73.5	82.2	51.1	52.2	51.9	60.9	66.3	88.7	94.1	94.9	64.4	60.6	57.4	54.2	48.7	47.8

LAF,90.0%	LAF,95.0%	LAF,99.0%	LCF,0.1%	LCF,1.0%	LCF,5.0%	LCF,10.0%	LCF,50.0%	LCF,90.0%	LCF,95.0%	LCF,99.0%	Lfreq	LFFmax																	
												8.0 Hz	16 Hz	31.5 Hz	63 Hz	125 Hz	250 Hz	500 Hz	1.0 kHz	2.0 kHz	4.0 kHz	8.0 kHz	16.0 kHz	8.0 Hz	16 Hz	31.5 Hz	63 Hz	125 Hz	250 Hz
47.8	47.6	47.3	76	71.4	66.4	64	56.1	53	52.6	52	68.5	66.6	53.1	47.4	51.4	50.8	50.5	46	44.5	36.9	29.5	24.5	87.2	87	76	68.8	71.2	67.7	

WITH A NOR139 OR NOR140 NOISE LOGGER YOU NEVER HAVE TO REPEAT A NOISE TEST.