

Soundweb - Noise Monitoring via the web



Soundweb is a web based solution for all noise monitoring applications .
permanent or semi permanent to variable locations.

Soundweb is a true Remote Interrogation Noise Monitoring System

It allows you to interrogate real time results, Data & audio events, as well as view the sound level measurements from your PC up to thousands of km at the Soundweb Logger site via a web based connection.

Soundweb is ideally suited for:

- Compliance & Licensing
- Base Line Studies
- Ongoing Fixed Noise Profiling
 - ▶ Mine sites Boundaries
 - ▶ Wind Generator farms
 - ▶ Local Gov. urban public venues

Soundweb

- Records sec. by sec. noise data
- Records sec. by sec. audio files
- produces end-of-day reports in PDF format
- produces end-of-day statistical data which is emailed to client - user

Soundweb Remote Unit

The Logging Outdoor Unit comprises of specially selected "low power" computer components, internet connection and a Sound Level Meter.

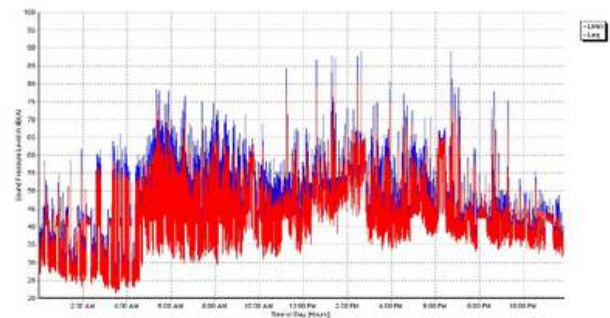
Designed for permanent or semi-permanent installations, the unit is secure and tamperproof. The cabinet - enclosure is lockable with full perimeter seals.

The system is protected from power surges and power outages if operated with mains with a 24+ hour backup battery supply.

The system can also be powered by Optional Solar Power System.



Daily Sound Pressure Level
17 October 2010
Mobile
Noise Mapping Australia 31172405



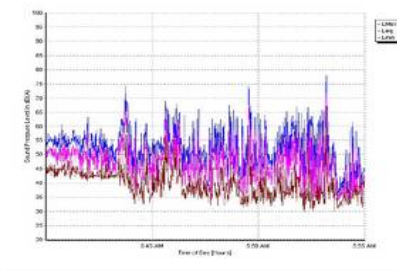
Soundweb by Noise Mapping Australia. Automatically generated

DAILY SUMMARY REPORT

17 October 2010
Mobile
Noise Mapping Australia 31172405

DAILY SUMMARY REPORT
17 October 2010
Mobile
Noise Mapping Australia 31172405

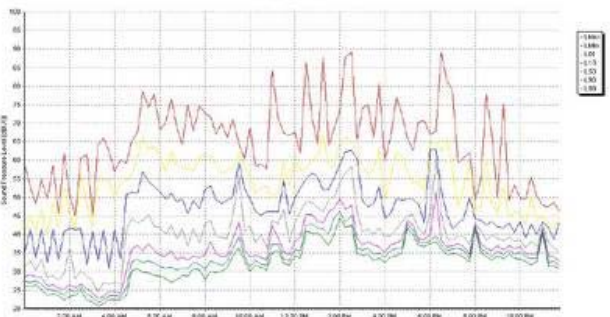
Start Time	Leq	L10	L1	L5	L50	L90	L95	L99
00:00:00	54	60	48	52	54	58	57	60
00:15:00	54	60	48	52	54	58	57	60
00:30:00	54	60	48	52	54	58	57	60
00:45:00	54	60	48	52	54	58	57	60
01:00:00	54	60	48	52	54	58	57	60
01:15:00	54	60	48	52	54	58	57	60
01:30:00	54	60	48	52	54	58	57	60
01:45:00	54	60	48	52	54	58	57	60
02:00:00	54	60	48	52	54	58	57	60
02:15:00	54	60	48	52	54	58	57	60
02:30:00	54	60	48	52	54	58	57	60
02:45:00	54	60	48	52	54	58	57	60
03:00:00	54	60	48	52	54	58	57	60
03:15:00	54	60	48	52	54	58	57	60
03:30:00	54	60	48	52	54	58	57	60
03:45:00	54	60	48	52	54	58	57	60
04:00:00	54	60	48	52	54	58	57	60
04:15:00	54	60	48	52	54	58	57	60
04:30:00	54	60	48	52	54	58	57	60
04:45:00	54	60	48	52	54	58	57	60
05:00:00	54	60	48	52	54	58	57	60
05:15:00	54	60	48	52	54	58	57	60
05:30:00	54	60	48	52	54	58	57	60
05:45:00	54	60	48	52	54	58	57	60
06:00:00	54	60	48	52	54	58	57	60
06:15:00	54	60	48	52	54	58	57	60
06:30:00	54	60	48	52	54	58	57	60
06:45:00	54	60	48	52	54	58	57	60
07:00:00	54	60	48	52	54	58	57	60
07:15:00	54	60	48	52	54	58	57	60
07:30:00	54	60	48	52	54	58	57	60
07:45:00	54	60	48	52	54	58	57	60
08:00:00	54	60	48	52	54	58	57	60
08:15:00	54	60	48	52	54	58	57	60
08:30:00	54	60	48	52	54	58	57	60
08:45:00	54	60	48	52	54	58	57	60
09:00:00	54	60	48	52	54	58	57	60
09:15:00	54	60	48	52	54	58	57	60
09:30:00	54	60	48	52	54	58	57	60
09:45:00	54	60	48	52	54	58	57	60
10:00:00	54	60	48	52	54	58	57	60



L01 = 62.7 L05 = 57.3 L10 = 54.8 L50 = 47.3 L90 = 38.3 L95 = 36.7

Daily Statistical Noise Levels

17 October 2010
Mobile
Noise Mapping Australia 31172405



Soundweb by Noise Mapping Australia. Automatically generated report at: 11:51:41 PM on 17/10/2010